

Polar Equine Wearlink

1. Placing the WearLink belt and transmitter

Place the WearLink belt as indicated, with the transmitter pocket on the left side of the horse. By doing so, you ensure the electrodes of the belt are in the right position.



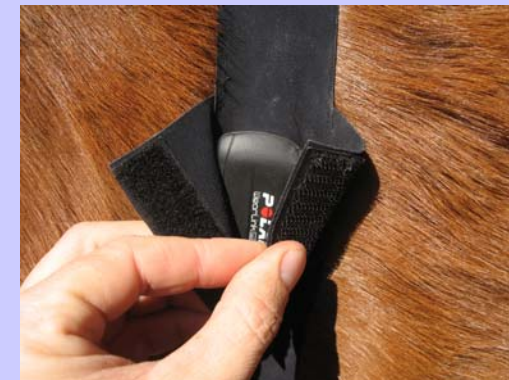
Clip the transmitter to its contact points, as indicated.



Then close the pocket by using the velcro straps.



This pocket protects your transmitter from shocks and scratches and prevent it from falling off the belt.



The range of the WearLink transmitter is over 10m, therefore you can follow your horse's heart rate when working with a leash.

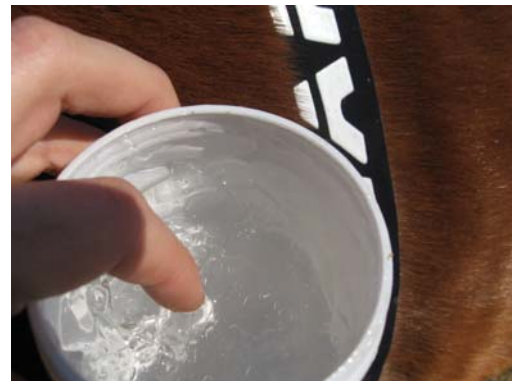


Using contact gel on the electrodes of the WearLink belt is highly recommended. It ensures a better detection of the horse's heart rate.

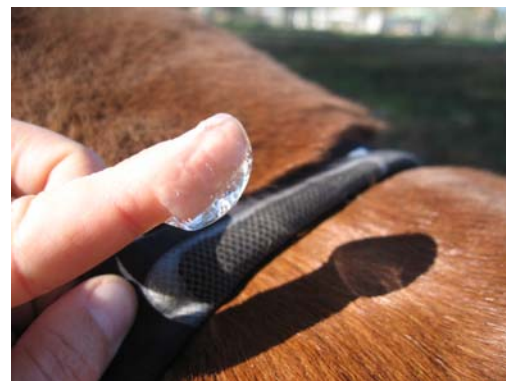
The hypo-allergenic and chloride-free electrode gels ensure a better conductivity. Non-thinning formula will not break down or irritate after lengthy contact.

Here is an example of conductive gel recommended by the biggest electrodes manufacturers, to be used on multifunctional electrodes.

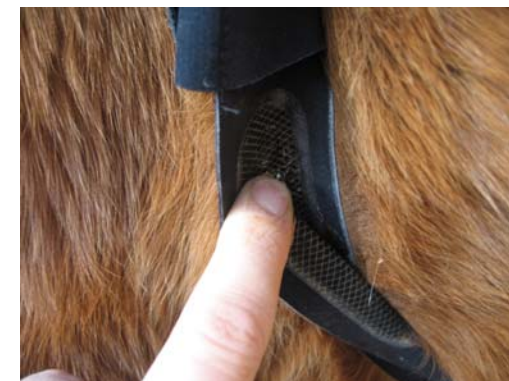
The gel should be placed on the electrodes located at the back of the WearLink transmitter.



Put a "dab" of gel on the top electrode...



... And on the bottom electrode (under the transmitter pocket).



You can now saddle up, your WearLink belt and transmitter are now ready for use!

